


RJ 45 Cable Glands Brass



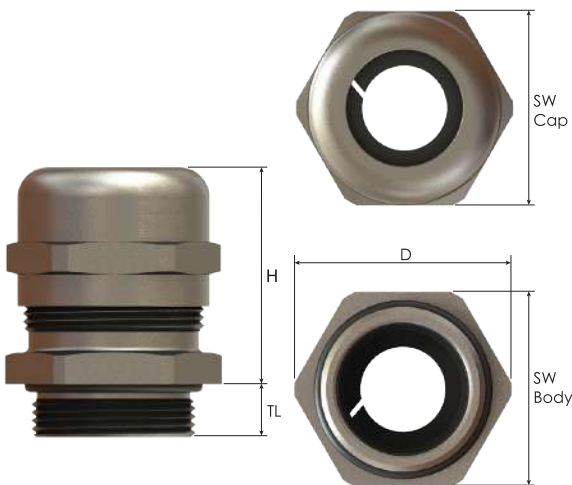
Cable glands for RJ 45 cables

- For standard industrial applications using data cables with pre-assembled cables with RJ 45 connectors.
- For metal machines and housings.
- For industrial applications in harsh environments.
- Easy assembly: 1- feed connector through cable gland 2- assemble splitted seal around cable 3- insert seal into gland body 4- install cable gland 5- tighten cap.
- High quality strain relief and sealing, reliable performance for standard industrial applications.

Technical Details

Material	Body, Cap	Brass Nickel plated	
	Seal	CR (Chloroprene)	
	Clamping Insert	PA6 (Polyamide 6)	
	O-ring	NBR	
Ingress Protection Rating	IP 68 - 5 Bar, 30 min		
UL Environmental Rating	TYPE 1, 4X acc. to UL 50E		
Flammability	V2 according to UL94		
Operating Temperature	Permanent	-20 °C to +100 °C	
	Intermittent	-40 °C to +150 °C	
Thread Type	<ul style="list-style-type: none"> • Metric EN 60423 • Other thread types also available upon request. 		
Cable Type	Non armoured, with pre-assembled RJ45 connector		
Accessories	<ul style="list-style-type: none"> • Lock nuts • Dome plugs • Gaskets 		
Remarks	• In compliance with DIN EN 62444.		
	• We recommend the use of lock nuts and gaskets to ensure IP rating for rough surfaces or through holes.		
	• O-ring available in Metric and PG threads.		
	• All accessories must be ordered separately.		
Approvals	Certificate Number	Standards	
	E199260	UL541B UL50E CSA22.2 No 18.3-12 CSA22.2 No 94.2-15	

For details of approvals see our webpage.



Thread Type METRIC acc. to EN 60423

Outer Thread Size (Male)	Cable Range Ø min - max mm	Outer Thread Length TL mm	Spanner Width		Outer Ø D mm	max. Height H mm	Part Number
			Cap SW Cap mm	Body SW Body mm			
M20x1,5	3,0 - 6,0	8,0	24	24	26,5	30,0	BMBCRJ-02S-A
	3,0 - 6,0	12,0	24	24	26,5	30,0	BMBERJ-02S-D
	5,0 - 9,0	8,0	24	24	26,5	30,0	BMBCRJ-02S-C
	5,0 - 9,0	6,0	24	24	26,5	30,0	BMBCRJ-02S-B
M25x1,5	3,0 - 6,0	8,0	24	27	30,0	30,0	BMBCRJ-03-A
	3,0 - 6,0	8,0	27	27	30,0	32,5	BMBCRJ-E3-A
	3,0 - 6,0	10,0	30	30	33,0	35,0	BMBCRJ-03S-A
	3,0 - 6,0	12,0	24	27	30,0	30,0	BMBERJ-03-C
	5,0 - 9,0	8,0	24	27	30,0	30,0	BMBCRJ-03-B
M32x1,5	3,0 - 6,0	9,0	30	34	37,5	35,0	BMBCRJ-04-A
	5,0 - 9,0	9,0	30	34	37,5	35,0	BMBCRJ-04-B
M40x1,5	5,0 - 8,0	9,0	43	43	48,5	45,5	BMBCRJ-E5-A
	5,0 - 8,0	15,0	43	43	48,5	45,5	BMBERJ-E5-B